



Noise Compatibility

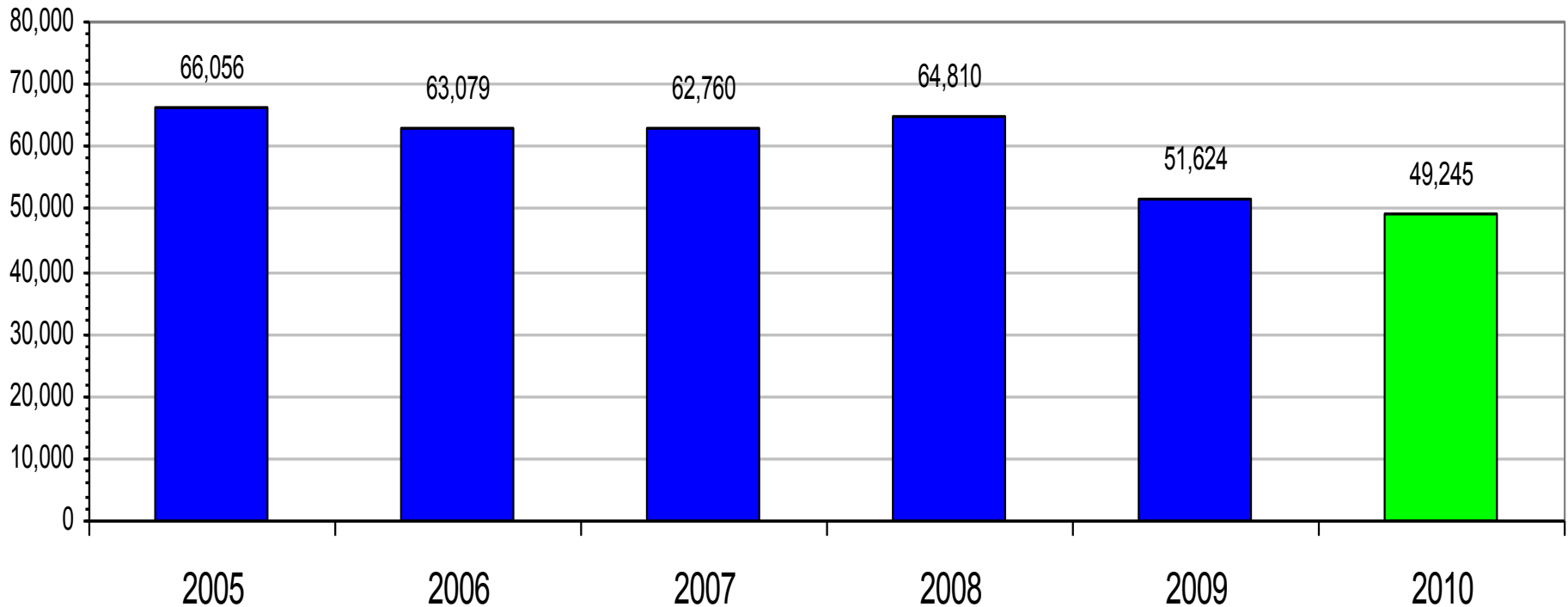
2nd Quarter 2010

August 24, 2010

Aircraft Operations



Cleveland 2nd Qtr. Operations 2005 - 2010



There were 49,245 landings and takeoffs in the 2nd qtr. 2010; this is 4.6% below the 2nd qtr. 2009.

Source: FAA Control Tower Traffic Count Reports

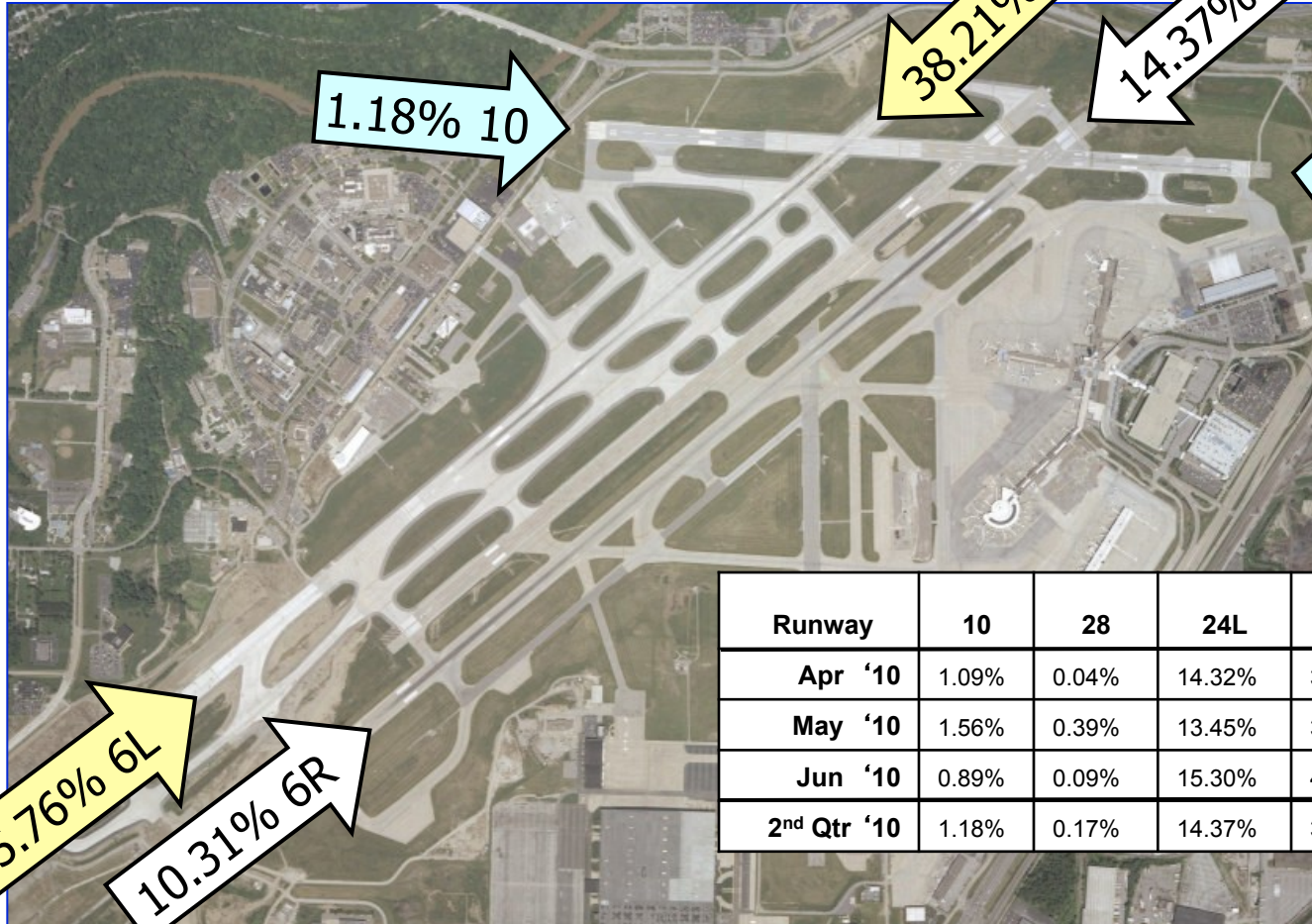
Fleet Mix: 2nd Qtr, 2010 vs. 2nd Qtr, 2009



Landings & Takeoffs

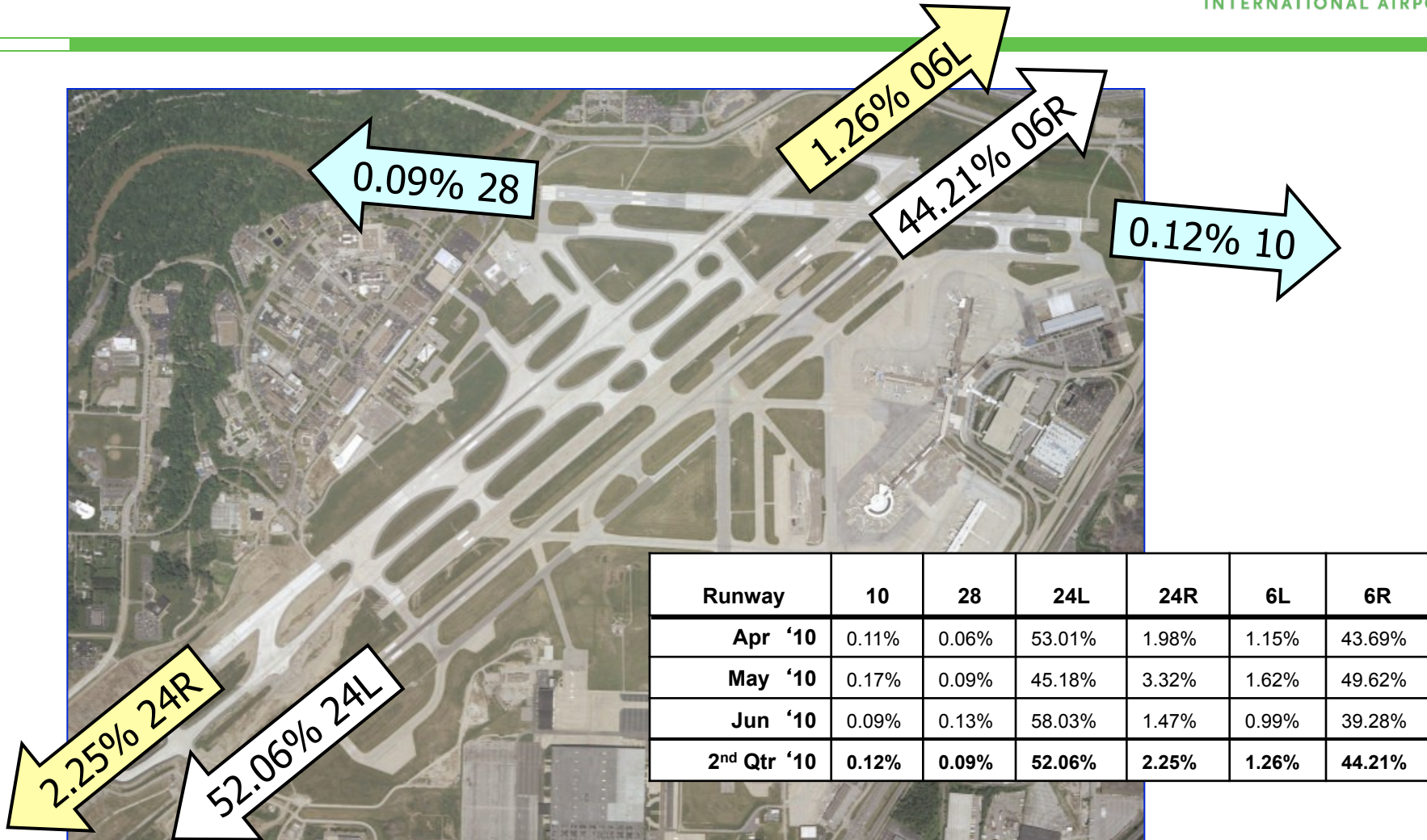
	2 nd Qtr, 2010		2 nd Qtr, 2009	
Commercial				
-Stage 2 with hush kit	127	0.26%	102	0.20%
-Heavy (incl all B757s)	785	1.59%	1,090	2.11%
-Other Stage 3	12,360	25.10%	14,457	28.00%
-Regional Jet	25,601	51.99%	25,276	48.96%
-Turboprop	7,353	14.93%	7,892	15.29%
Air Taxi	647	1.31%	680	1.32%
General Aviation	2,284	4.64%	2,062	3.99%
Military	88	0.18%	65	0.13%
Total	49,245	100.00%	51,624	100.00%

Runway Use: 2nd Qtr, 2010 Landings

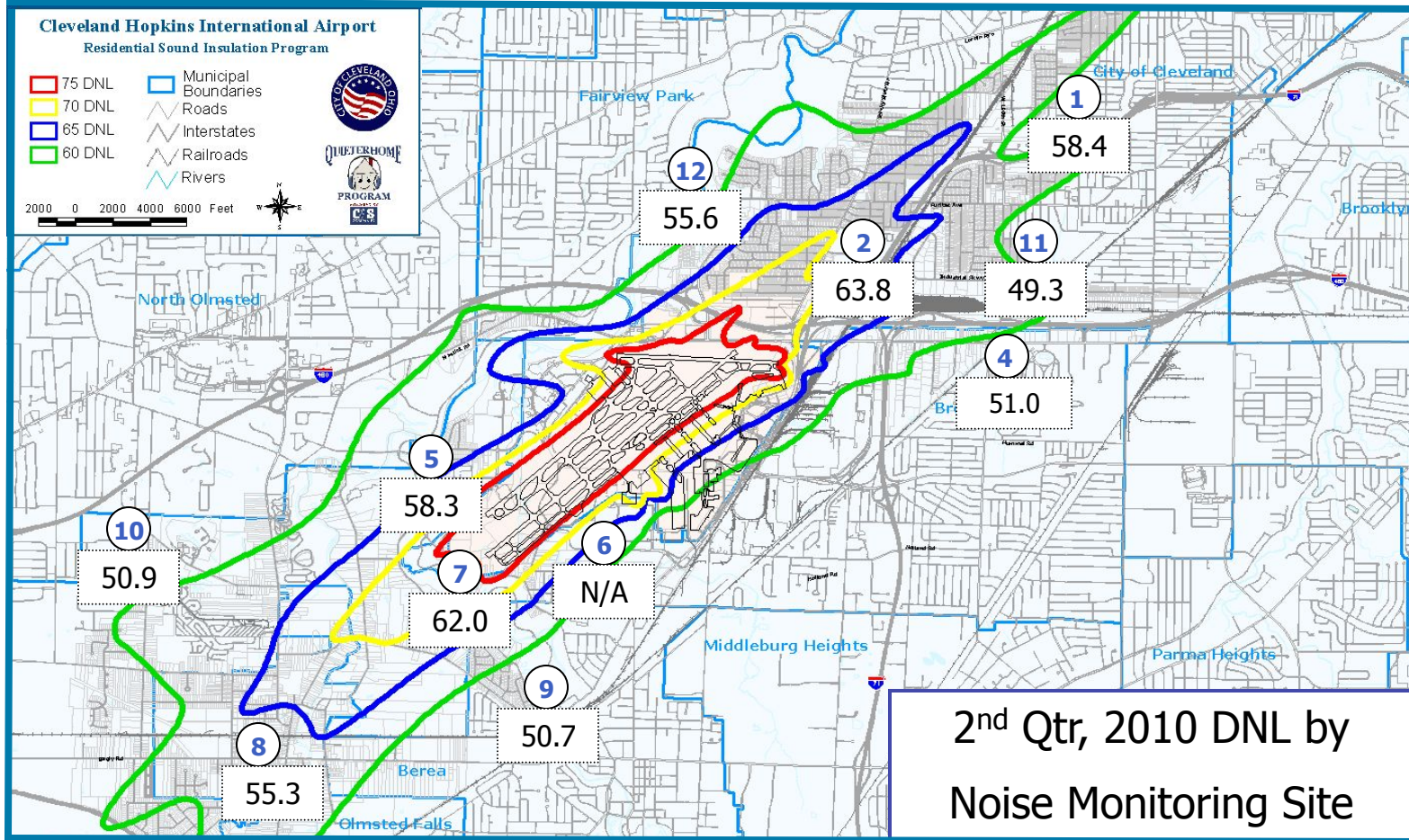


Runway	10	28	24L	24R	6L	6R
Apr '10	1.09%	0.04%	14.32%	38.65%	36.08%	9.82%
May '10	1.56%	0.39%	13.45%	33.60%	40.38%	10.61%
Jun '10	0.89%	0.09%	15.30%	42.21%	31.02%	10.50%
2nd Qtr '10	1.18%	0.17%	14.37%	38.21%	35.76%	10.31%

Runway Use: 2nd Qtr, 2010 Take-Offs

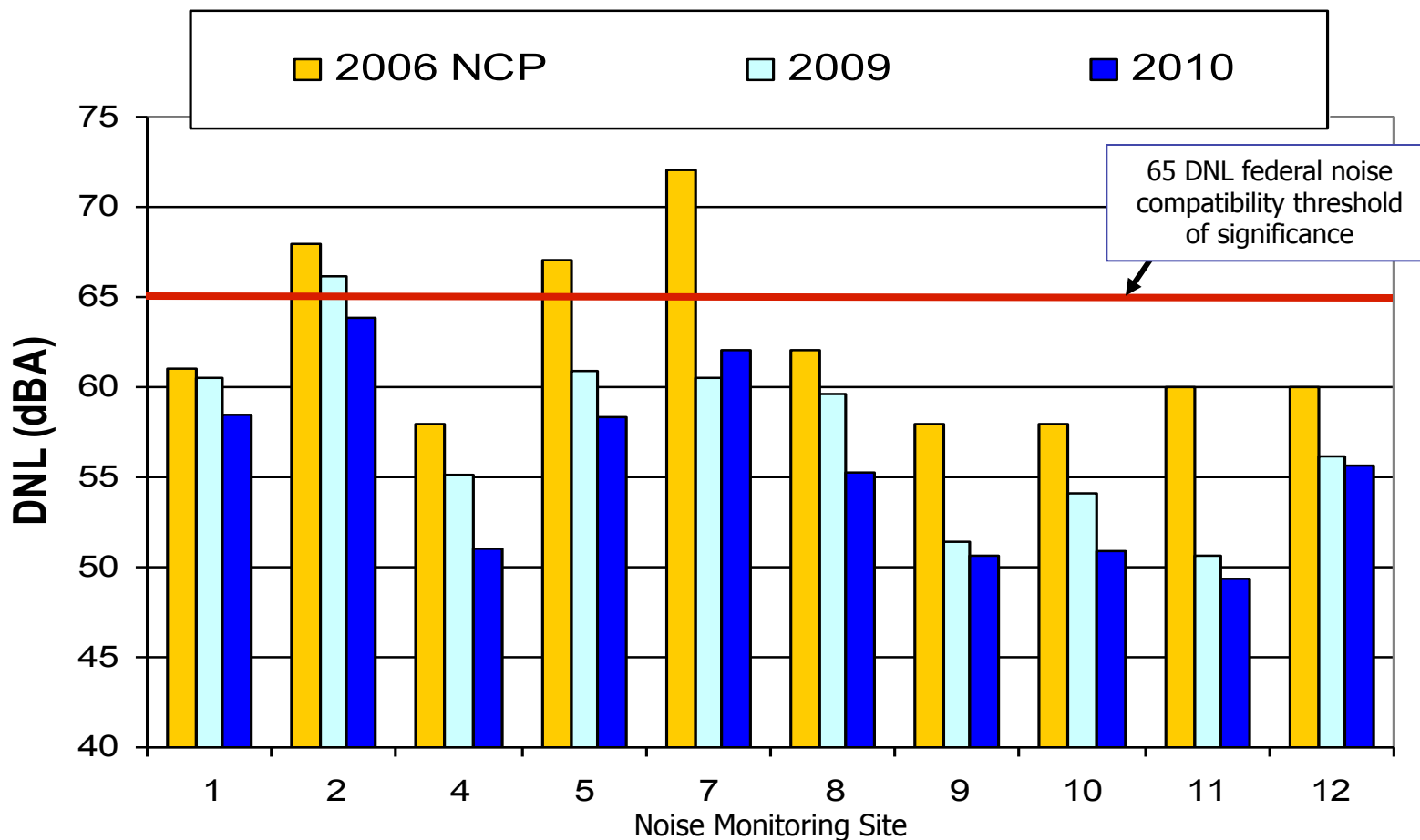


Aircraft Noise



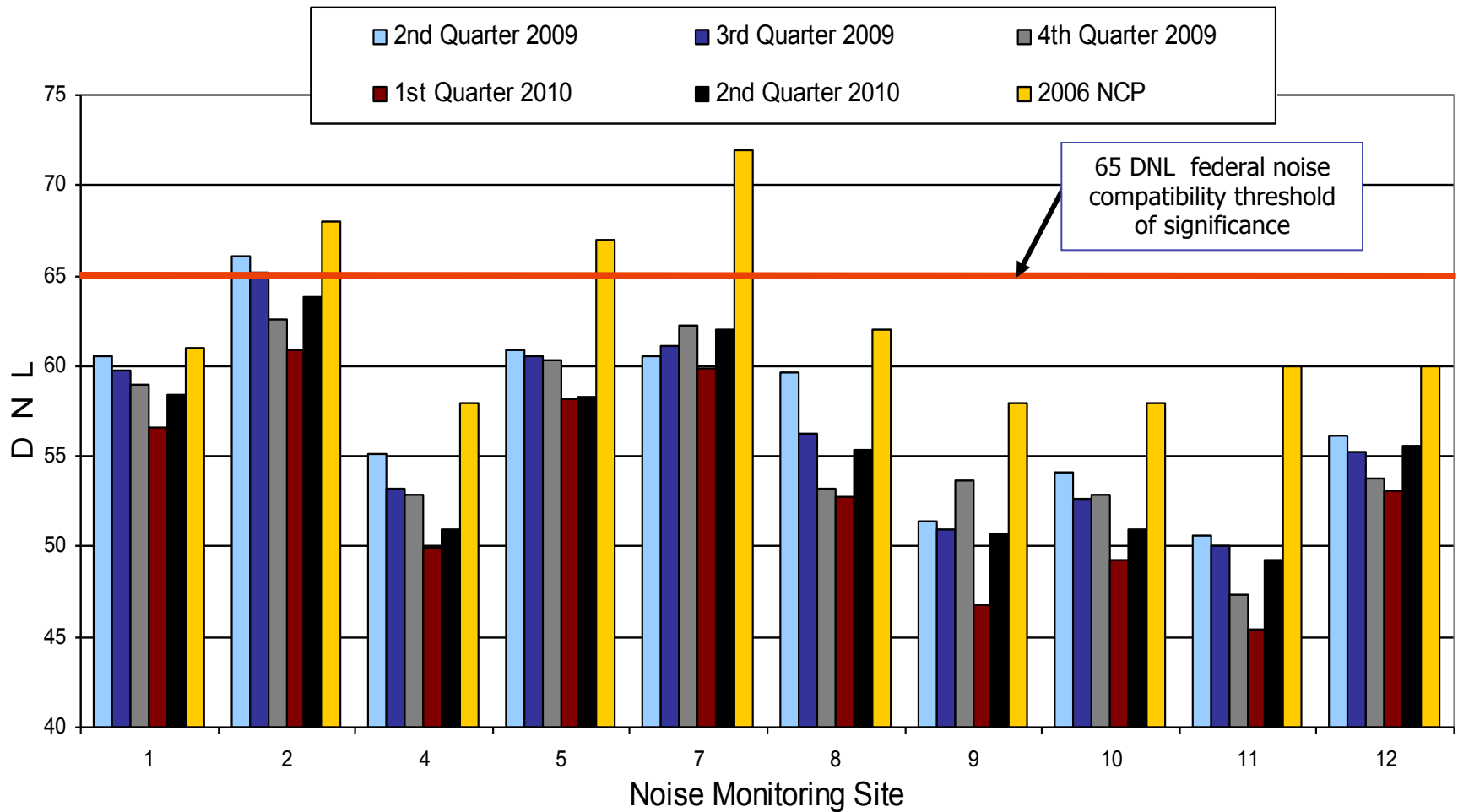
Due to mechanical problems, much of NMS09 data was unavailable. The numbers for NMS09 presented in this report were calculated using 15 days in April, one in May, and two in June and then adjusting them to reflect the actual runway use through the quarter.

DNL: 2nd Qtr, 2010 vs. 2nd Qtr, 2009

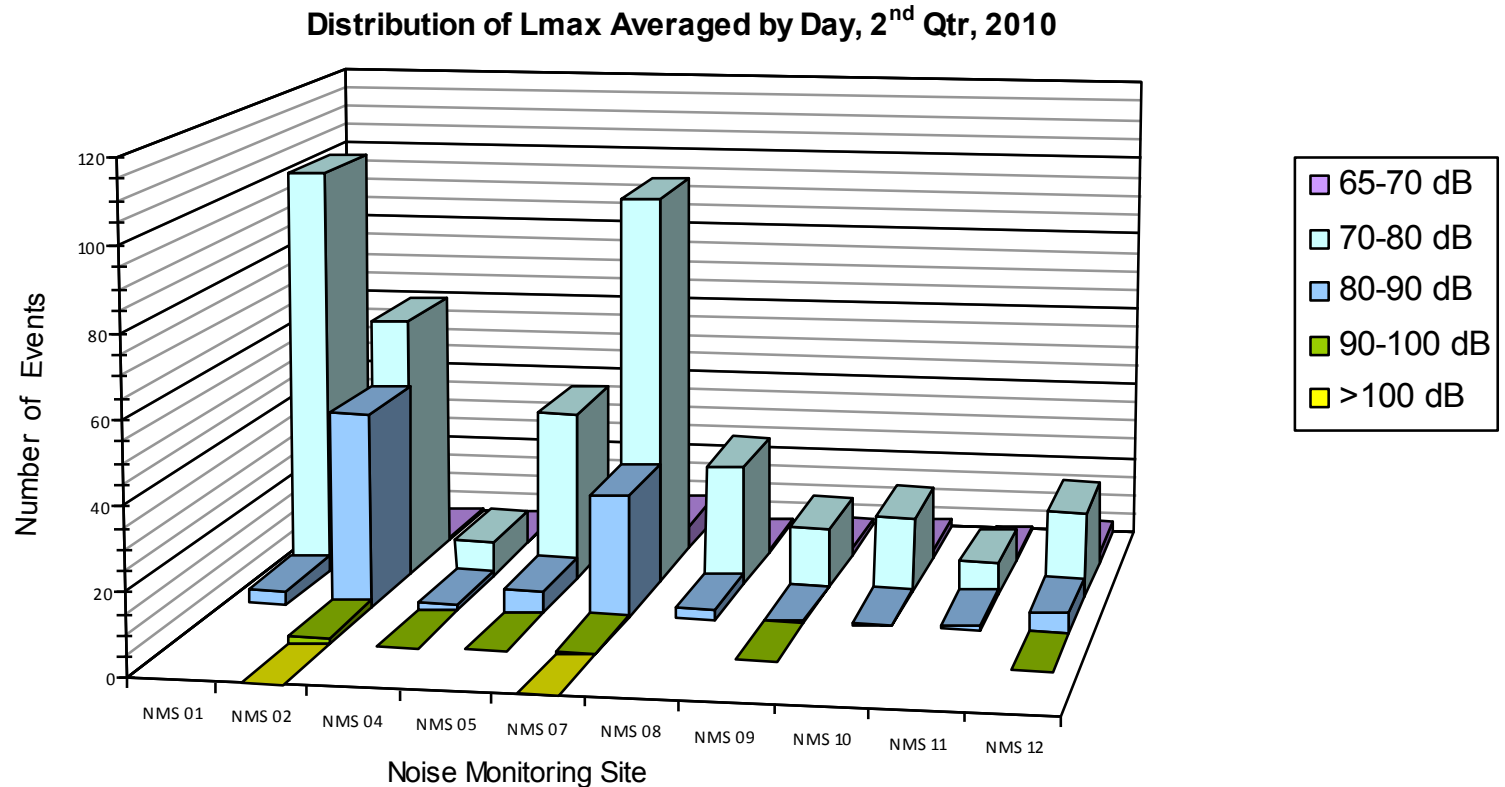


Due to mechanical problems, much of NMS09 data was unavailable. The numbers for NMS09 presented in this report were calculated using 15 days in April, one in May, and two in June and then adjusting them to reflect the actual runway use through the quarter.

Five Qtr DNL Comparison



Distribution of Noise Events



Due to mechanical problems, much of NMS09 data was unavailable. The numbers for NMS09 presented in this report were calculated using 15 days in April, one in May, and two in June and then adjusting them to reflect the actual runway use through the quarter.

Top 3 Lmaxs at each NMS, 1st Qtr, (1 of 2)



NMS	Lmax (dB)	Aircraft	Operation	Time and date	Sound Exposure Level (dB)	Duration (sec)
NMS01	88.4	Airbus 300-600	Arrival on Rwy 24R	6/22/2010 6:30	92.2	42.5
NMS01	88.3	B727-200	Arrival on Rwy 24R	6/16/2010 5:14	95.6	29.5
NMS01	88.0	B737-700	Arrival on Rwy 24R	5/7/2010 21:07	92.0	26.0
NMS02	100.3	B727-200	Departure off Rwy 6R	6/1/2010 23:50	106.7	29.5
NMS02	99.1	MD-11	Arrival on Rwy 24L	6/22/2010 5:49	103.2	20.0
NMS02	98.2	B727-200	Arrival on Rwy 24L	6/22/2010 4:39	101.4	15.0
NMS04	91.2	B727-200	Departure off Rwy 6R	4/28/2010 1:07	98.8	31.5
NMS04	90.8	Lear 25	Departure off Rwy 6L	6/30/2010 2:46	99.7	54.0
NMS04	90.2	Lear 25	Departure off Rwy 6L	4/13/2010 10:36	99.0	57.0
NMS05	99.8	Military Jet	Departure off Rwy 24R	5/4/2010 15:40	102.2	21.0
NMS05	97.9	Lear 25	Departure off Rwy 6L	4/13/2010 10:35	105.4	72.0
NMS05	92.8	Lear 25	Departure off Rwy 24L	6/28/2010 8:52	99.0	35.0
NMS07	103.5	B727-200	Departure off Rwy 24L	5/5/2010 23:00	107.7	42.0
NMS07	99.2	B727-200	Departure off Rwy 24L	6/9/2010 22:57	105.2	31.5
NMS07	98.8	B727-200	Departure off Rwy 24L	6/16/2010 22:56	105.1	31.0

Sound Exposure Level is a measure that takes into account all noise over the entire duration of an event.

Top 3 Lmaxs at each NMS, 1st Qtr, (2 of 2)



NMS	Lmax (dB)	Aircraft	Operation	Time and date	Sound Exposure Level (dB)	Duration (sec)
NMS08	88.4	B737-200	Departure off Rwy 24L	6/20/2010 12:55	95.0	25.5
NMS08	87.1	B727-200	Departure off Rwy 24L	5/5/2010 23:01	97.5	47.0
NMS08	87.1	B737-200	Departure off Rwy 24L	5/1/2010 9:58	94.7	33.5
NMS09	97.8	B727-200	Departure off Rwy 24L	4/16/2010 18:23	104.0	37.0
NMS09	86.3	B737-200	Departure off Rwy 24L	4/17/2010 10:02	95.0	33.0
NMS09	84.0	B737-200	Departure off Rwy 24L	4/16/2010 8:35	92.9	30.0
NMS10	90.0	B727-200	Departure off Rwy 24L	4/29/2010 4:37	99.1	54.0
NMS10	88.5	B727-200	Departure off Rwy 24L	5/6/2010 22:50	95.0	29.5
NMS10	87.0	B727-200	Departure off Rwy 24L	6/23/2010 0:53	93.9	26.5
NMS11	89.8	B727-200	Departure off Rwy 6R	6/24/2010 23:12	97.8	27.0
NMS11	89.7	B737-200	Departure off Rwy 6R	5/18/2010 10:26	97.3	29.0
NMS11	87.0	MD-83	Departure off Rwy 6R	4/22/2010 10:25	94.9	28.0
NMS12	94.4	Lear 25	Departure off Rwy 6R	4/11/2010 14:40	103.2	57.0
NMS12	92.9	Lear 25	Departure off Rwy 6R	6/8/2010 18:40	102.1	47.0
NMS12	91.2	MD-11	Departure off Rwy 6L or R	5/24/2010 22:43	97.7	29.0

Sound Exposure Level is a measure that takes into account all noise over the entire duration of an event.

Noise Hotline (216.898.5220)



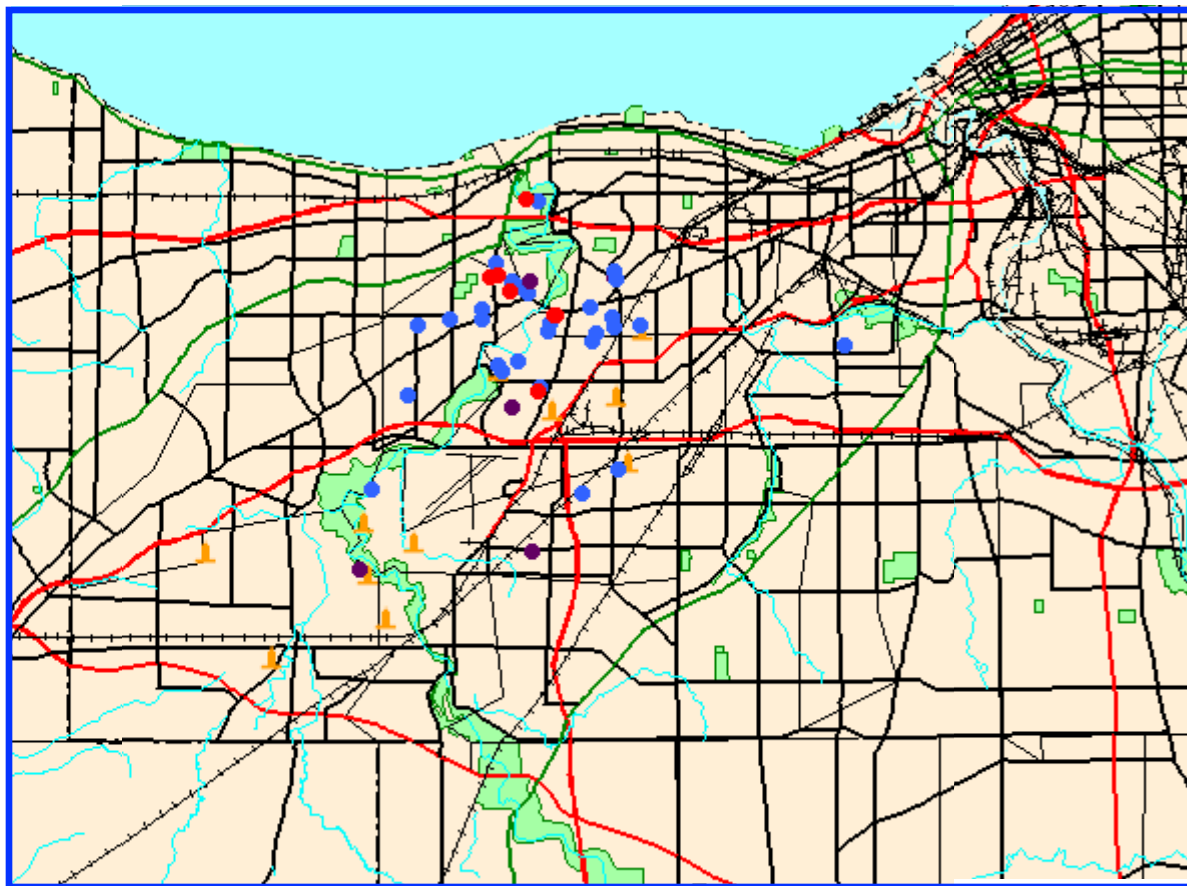
	Apr	May	Jun	2nd Qtr	%	Callers	%
Berea	0	0	0	0	0.00%	0	0.00%
Brook Park	1	2	5	8	5.26%	4	9.30%
Cleveland	13	14	33	60	39.47%	23	53.49%
Fairview Park	1	5	18	24	15.79%	10	23.26%
Lakewood	0	0	0	0	0.00%	0	0.00%
Middleburg Hts.	0	0	0	0	0.00%	0	0.00%
North Olmsted	0	0	0	0	0.00%	0	0.00%
Olmsted Falls	0	0	0	0	0.00%	0	0.00%
Olmsted Twp	1	1	0	2	1.32%	1	0.00%
Parma	0	0	0	0	0.00%	0	2.33%
Parma Heights	0	0	0	0	0.00%	0	0.00%
Rocky River	9	16	33	58	38.16%	5	11.63%
Westlake	0	0	0	0	0.00%	0	0.00%
Other	0	0	0	0	0.00%	0	0.00%
Total (2010)	25	38	89	152	100.00%	43	100.00%
Total (2009)	31	32	106	169	100.00%	17	100.00%

Complaint Location Map: 2nd Qtr, 2010

LEGEND

Complaints per household

-  1 complaint
-  2 to 5 complaints
-  6 or more
-  Noise Monitoring Station



CLE.
Going places.™

